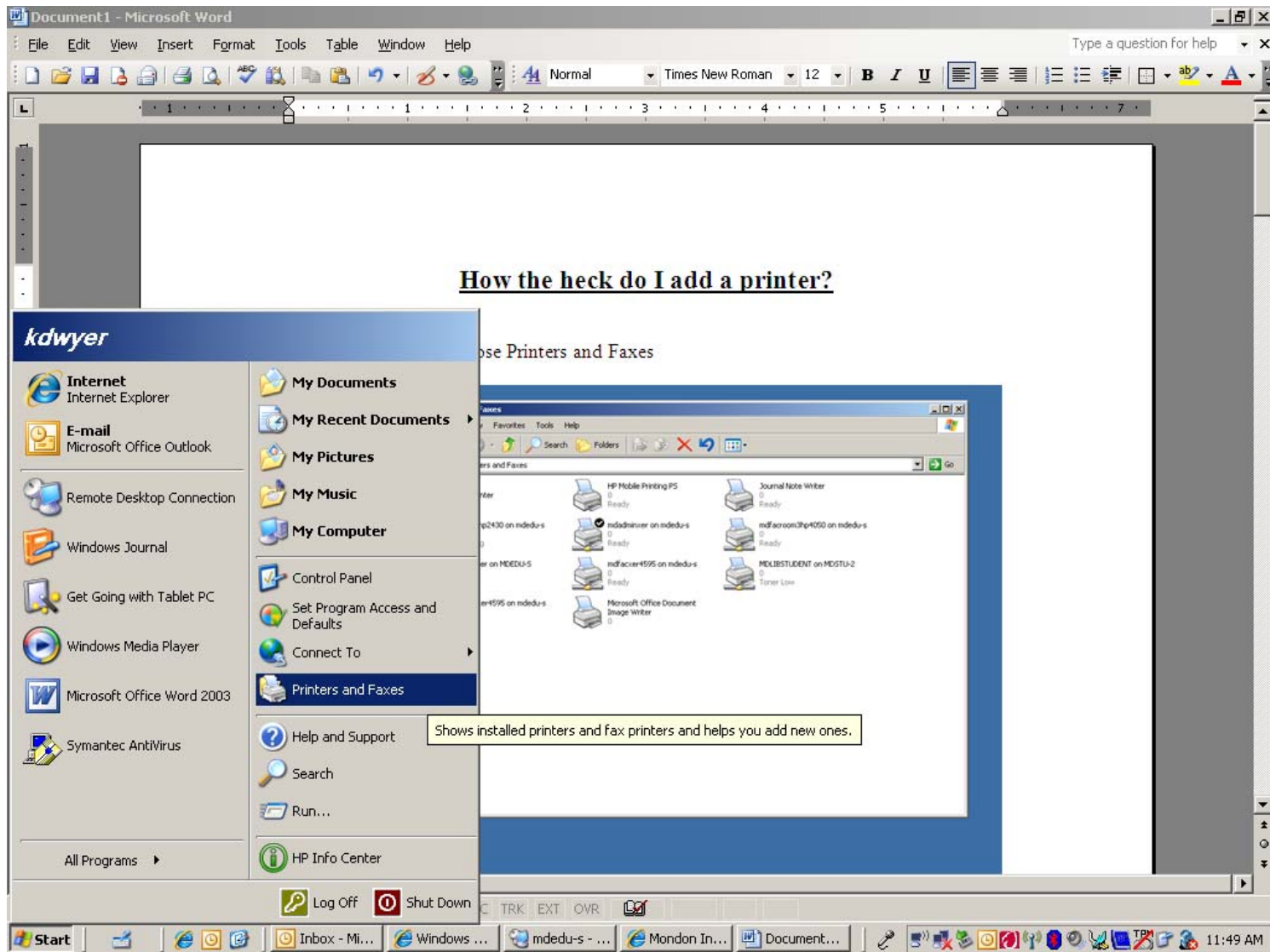
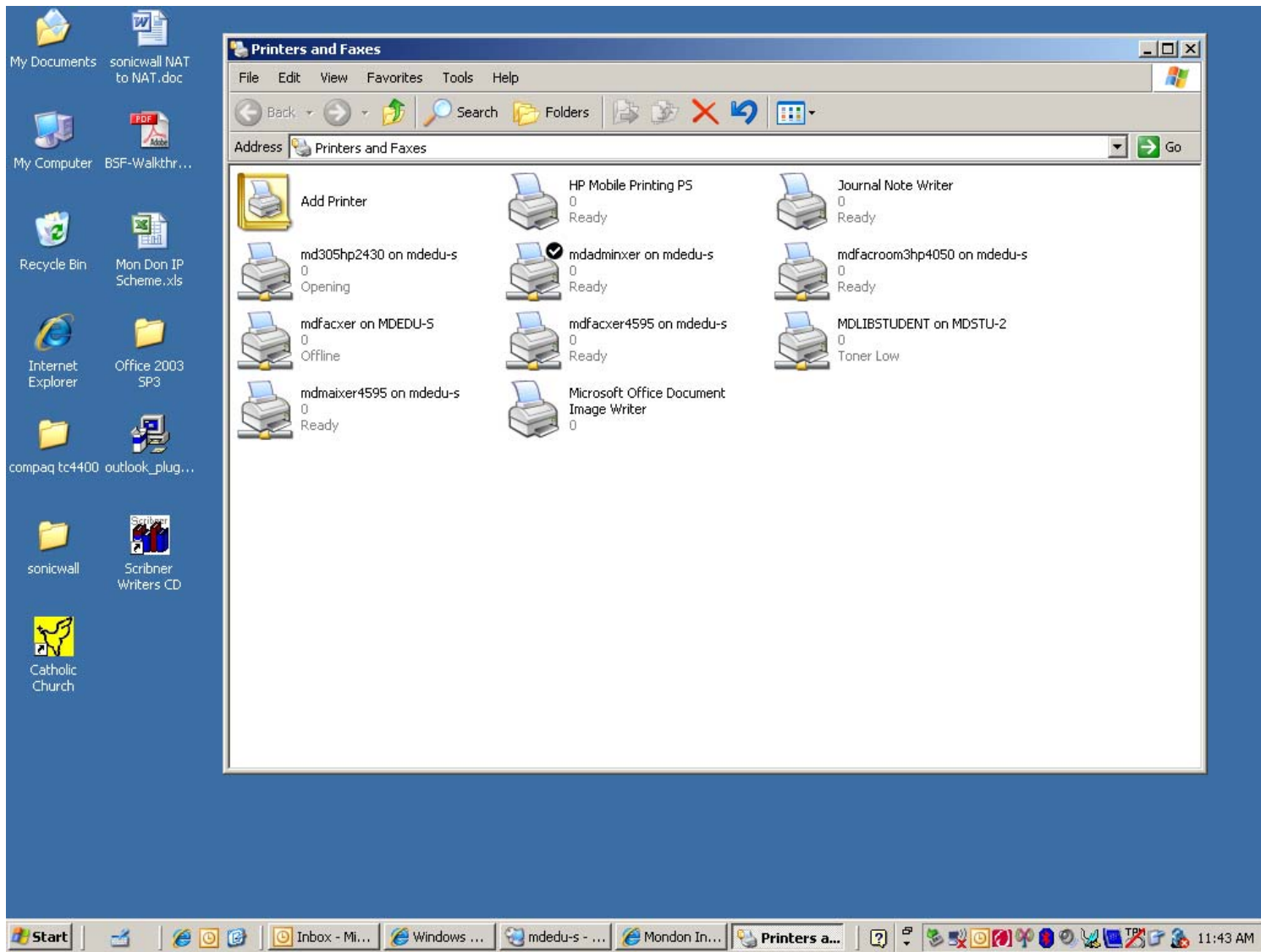


# How to Add a Printer

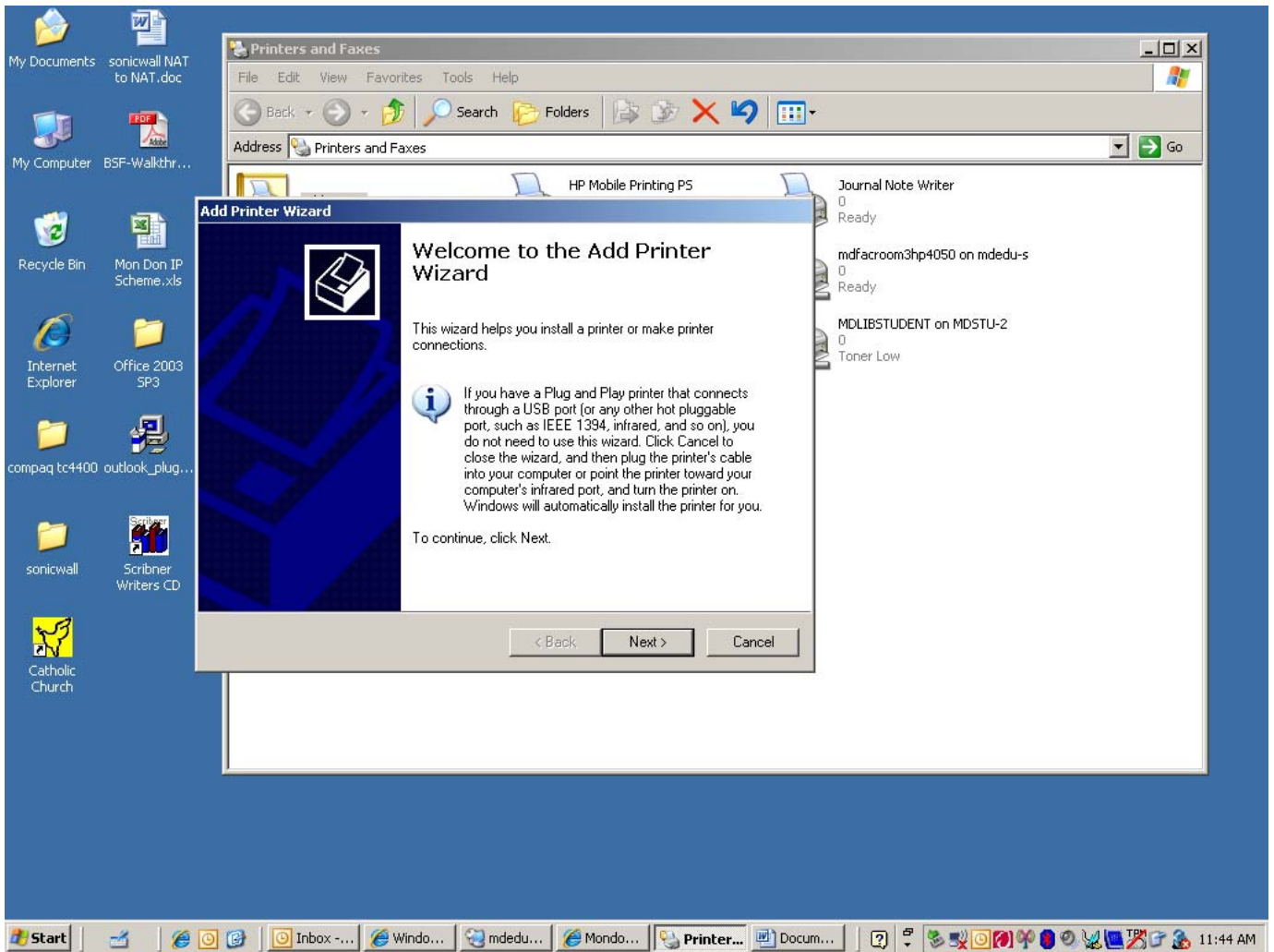
Click 'Start', and then choose 'Printers and Faxes'



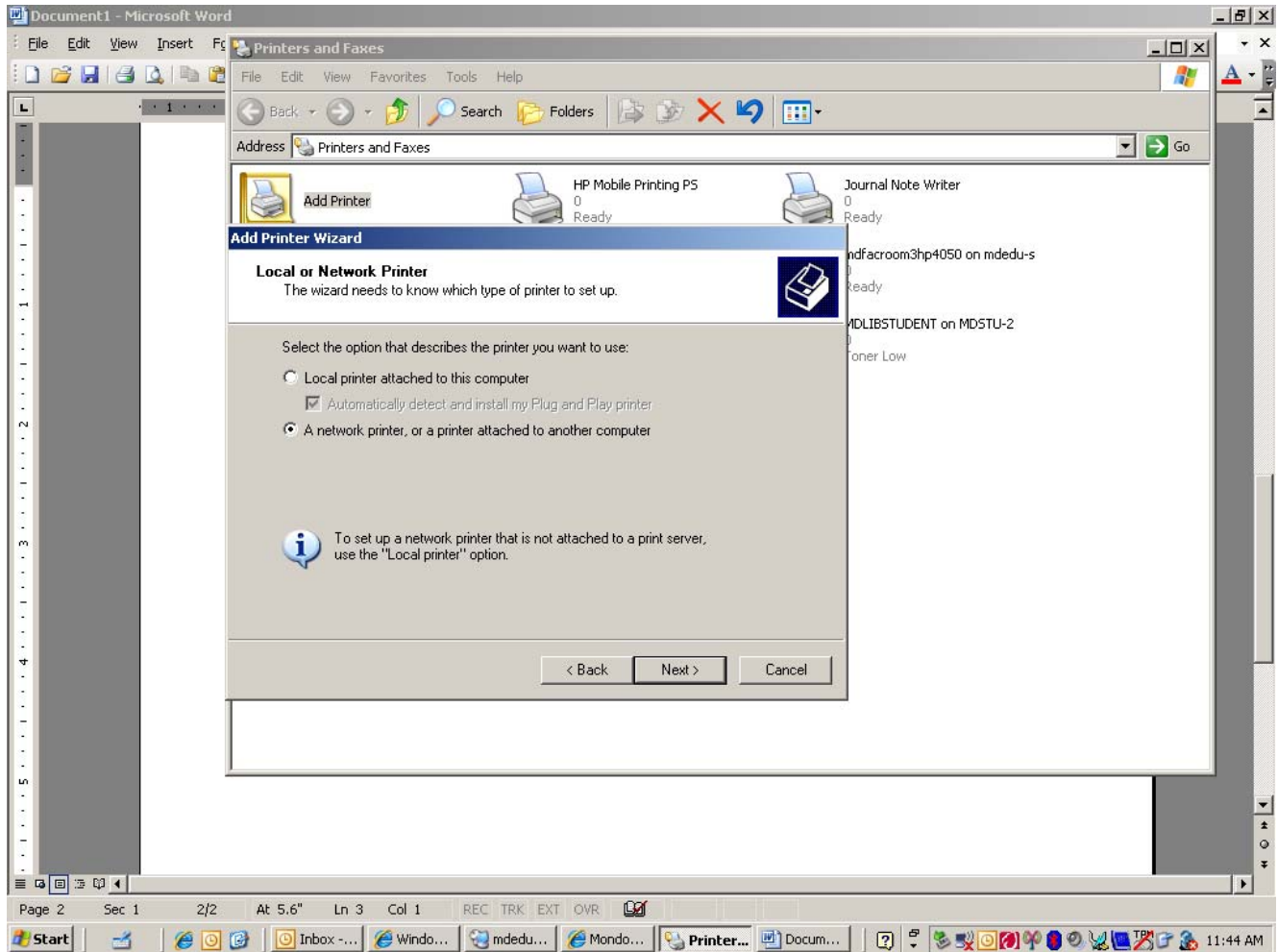
Click 'Add Printer' (There are 2 views of this window, if your view is different from this one look to the left of your screen for the 'Add Printer' option).



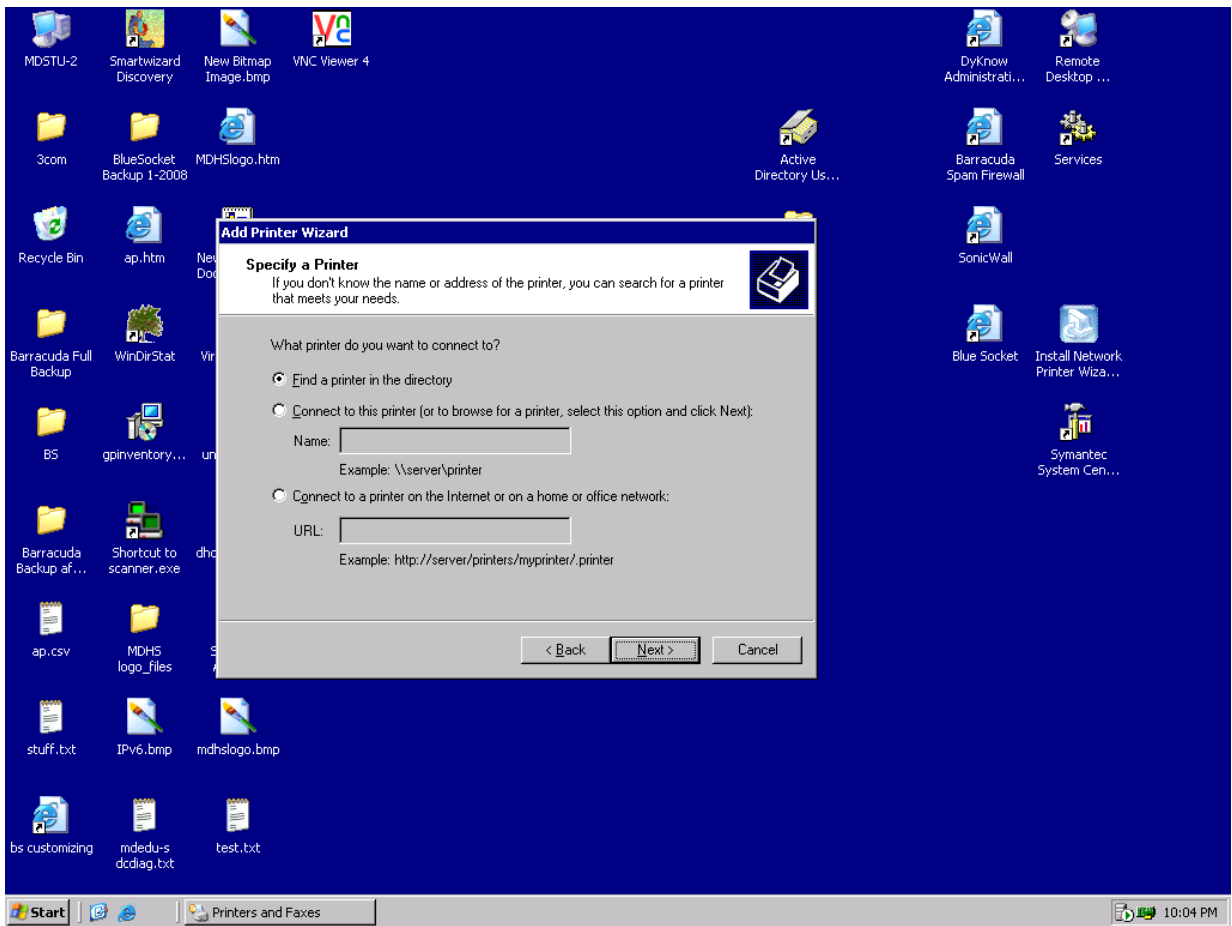
Click 'Next'



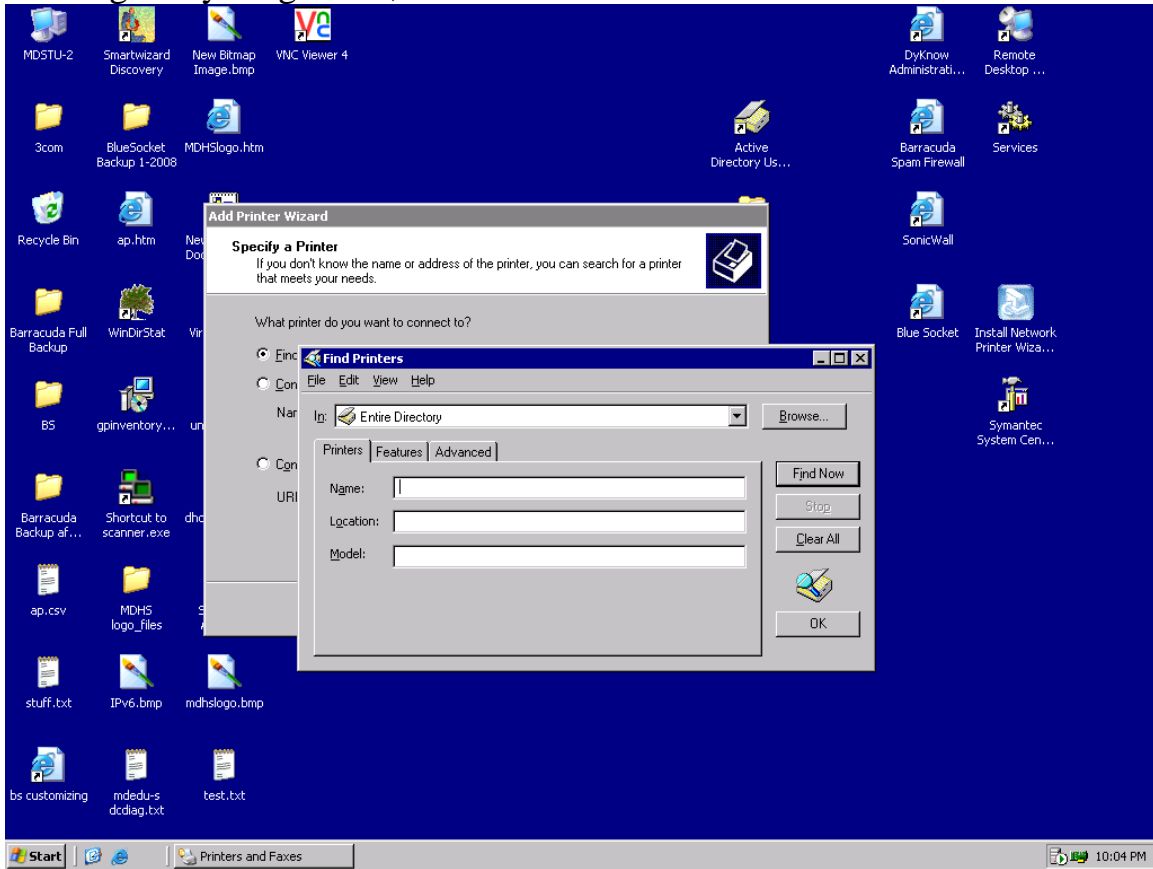
Make sure this option is chosen. Click 'Next'



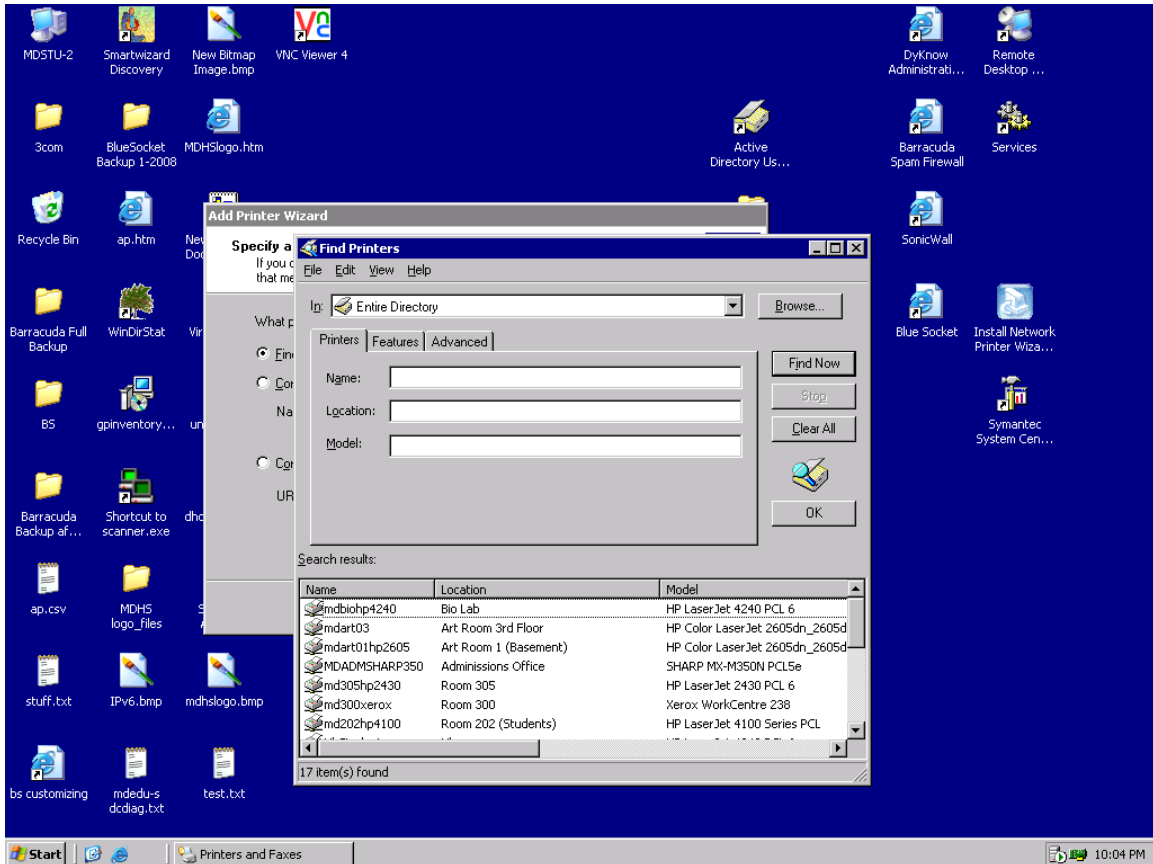
## Choose 'Find a Printer in the directory'



# Leaving everything blank, choose 'Find Now'



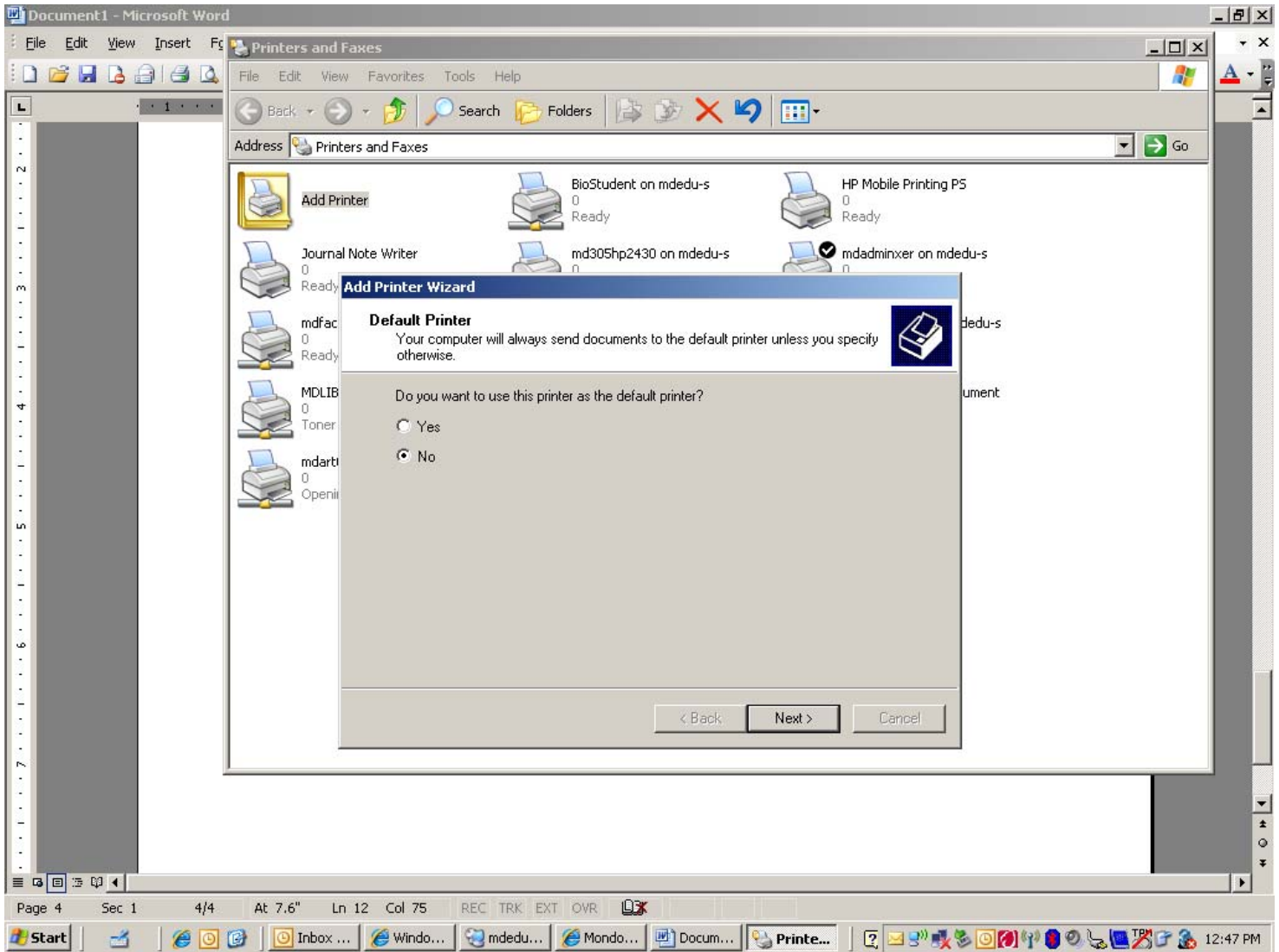
From the list, double click on the printer of your choice.



There will be a 30-60 second delay, perhaps longer, as the printer and drivers are added to your machine. Just wait for it to finish.

\*This delay only happens when you are adding the printer for the first time on the machine you are using.

When this screen appears, choose what you prefer.



Click 'Finish'

